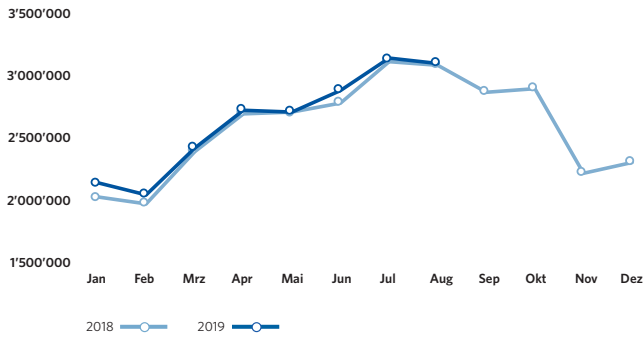
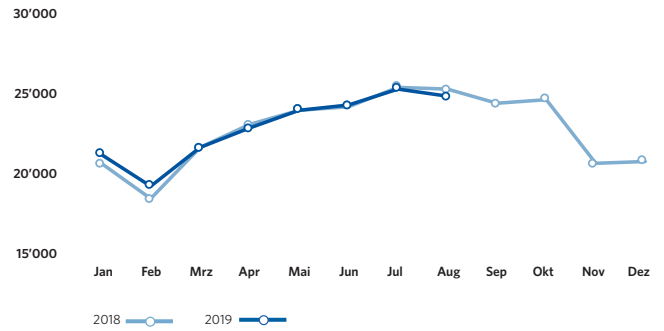


ZRH Key Figures August 2019

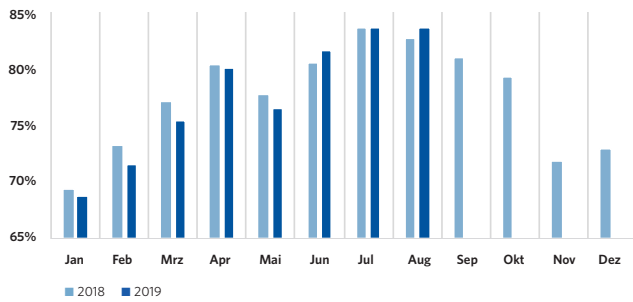
Pax-Numbers / Passagierzahlen



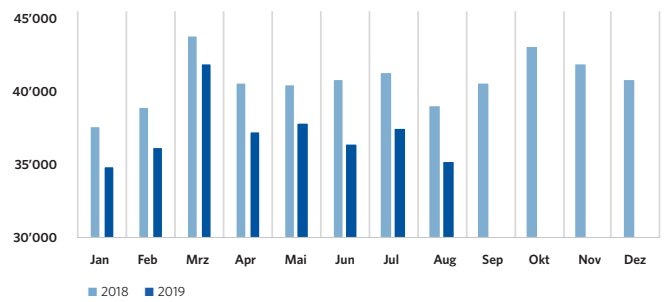
Air Traffic Movements / Flugbewegungen



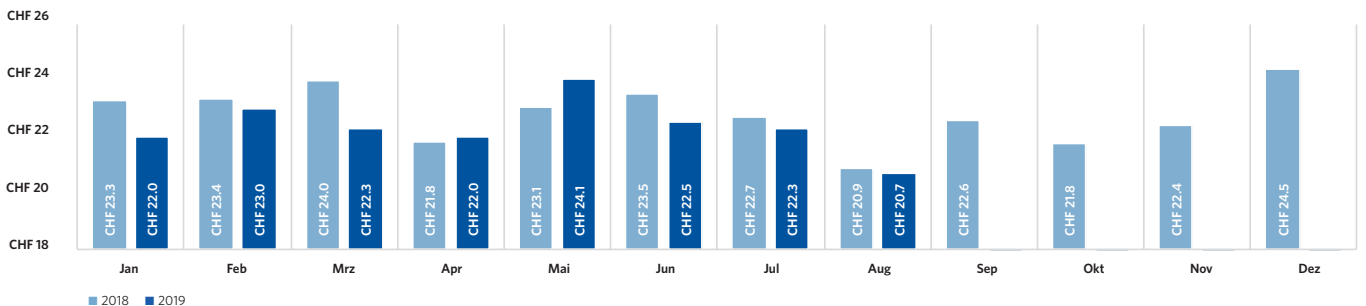
Seat Load Factor / Sitzladefaktor



Freight (in tons) / Fracht (in Tonnen)



Airside: Spend per departing Passenger / Ausgaben pro abfliegenden Passagier



ZRH Key Figures August 2019

Passengers / Passagiere	August 2019	Δ VJ Δ PY	YTD 2019	Δ VJ Δ PY
Total passengers / Total Passagiere	3'112'270	0.4%	21'186'223	1.8%
by type of passengers / nach Art der Passagiere				
Airline passengers / Linie & Charter	3'108'287	0.4%	21'152'571	1.8%
Local passengers / Lokalpassagiere	2'159'588	- 0.5%	14'938'089	0.7%
Transfer passengers / Transferpassagiere	947'562	2.6%	6'201'872	4.8%
Transfer share / Transferanteil	30.5%	0.7 PPT	29.3%	0.8 PPT
Transit passengers / Transitpassagiere	1'137	- 18.7%	12'610	11.1%
General Aviation & other passengers / General Aviation & Sonstige	3'983	- 5.3%	33'652	- 10.6%
by origin/destination (airline passengers only) / nach Herkunft/Ziel (Linie & Charter)				
Europe / Europa	2'325'025	0.7%	15'662'086	0.4%
European passenger share / Europäischer Passagieranteil	74.8%	0.2 PPT	74.0%	- 1.1 PPT
Intercontinental / Interkontinental	783'262	- 0.6%	5'490'485	6.2%
Intercontinental passenger share / Interkontinentaler Passagieranteil	25.2%	- 0.2 PPT	26.0%	1.1 PPT
North America / Nordamerika	9.6%	- 0.2 PPT	8.6%	0.1 PPT
Middle East / Mittlerer Osten	5.3%	- 0.4 PPT	5.5%	- 0.1 PPT
Far East / Ferner Osten	6.50%	0.1 PPT	7.4%	0.4 PPT
Africa / Afrika	2.1%	0.1 PPT	2.5%	0.3 PPT
Latin America / Lateinamerika	1.7%	0.1 PPT	2.0%	0.4 PPT
Air Traffic Movements / Flugbewegungen				
Total Air Traffic Movements / Total Flugbewegungen	25'256	- 1.8%	186'884	0.4%
Passenger Aircraft / Linie & Charter	22'555	- 0.6%	164'702	1.4%
Passenger aircraft / Passagierflüge	22'518	- 0.6%	164'453	1.4%
Freight aircraft / Frachtflüge	37	19.4%	250	6.8%
General Aviation & other / General Aviation & Übrige	2'701	- 10.9%	22'182	- 6.7%
Traffic Ratios (airlines only) & Cargo / Verkehrskennzahlen (Linie & Charter) & Fracht				
Seat Load Factor / Sitzladefaktor	83.6%	0.8 PPT	78.0%	- 0.5 PPT
Passengers per movement / Passagiere pro Bewegung	138.0	1.0%	128.6	0.4%
Seats per movement / Sitze pro Bewegung	165.3	0.0%	164.9	1.1%
Average Maximum Take-Off Weight / Durchschnittliches maximales Abfluggewicht	96.0 t	0.7%	95.6 t	0.6%
Freight / Fracht	35'459 t	- 10.0%	299'169 t	- 8.1%
Air freight / Luftfracht	27'141 t	- 10.1%	221'597 t	- 7.6%
Trucked freight (Road Feeding Service) / Strassenfracht (zwischen Flughäfen)	8'319 t	- 9.5%	77'572 t	- 9.4%
Mail / Post	2'114 t	1.5%	17'493 t	4.1%
ZRH Commercial Activities / ZRH Kommerzgeschäft				
Total turnover in mCHF / Gesamtumsatz in Mio. CHF	53.5	1.3%	398.3	0.7%
Airside		- 0.2%		0.0%
Landside		3.7%		1.7%
Airside: Spend per departing Passenger / Luftseite: Ausgaben pro abfliegenden Passagier	20.7	- 0.6%	22.3	- 1.8%

Flughafen Zürich AG

Postfach, CH-8058 Zürich-Flughafen
www.flughafen-zuerich.ch