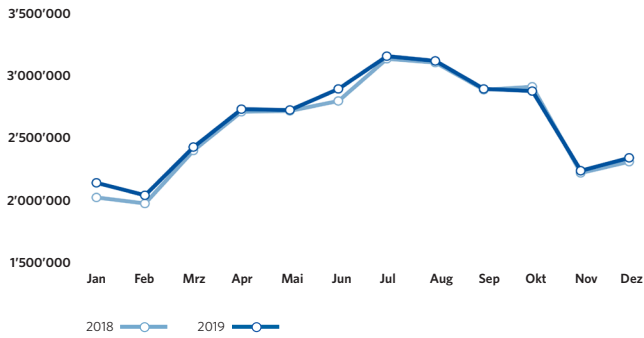
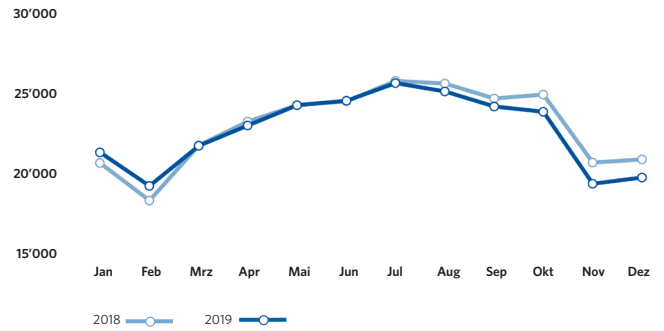


ZRH Key Figures Dezember 2019

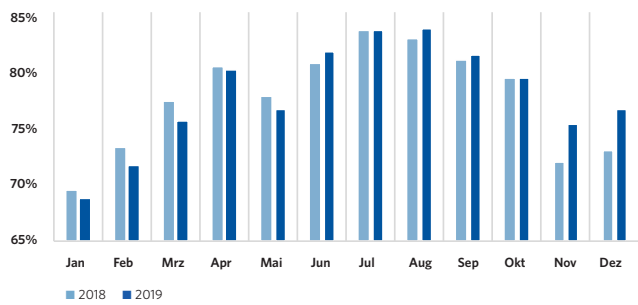
Pax-Numbers / Passagierzahlen



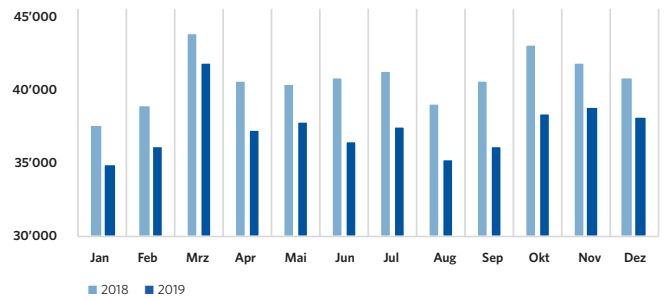
Air Traffic Movements / Flugbewegungen



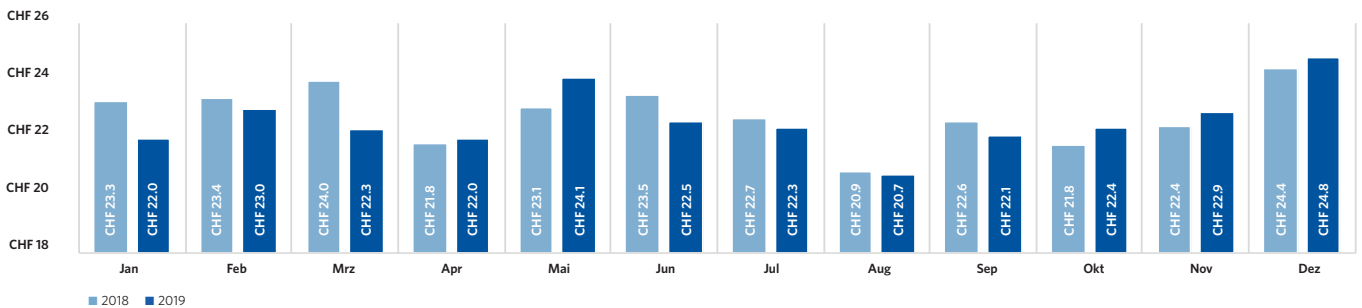
Seat Load Factor / Sitzladefaktor



Freight (in tons) / Fracht (in Tonnen)



Airside: Spend per departing Passenger / Ausgaben pro abfliegenden Passagier



ZRH Key Figures Dezember 2019

Passengers / Passagiere	December 2019 Dezember 2019	Δ VJ Δ PY	YTD 2019	Δ VJ Δ PY
Total passengers / Total Passagiere	2'332'820	1.2%	31'507'692	1.3%
by type of passengers / nach Art der Passagiere				
Airline passengers / Linie & Charter	2'329'529	1.2%	31'459'815	1.3%
Local passengers / Lokalpassagiere	1'621'144	0.7%	22'231'195	0.1%
Transfer passengers / Transferpassagiere	707'162	2.3%	9'209'982	4.2%
Transfer share / Transferanteil	30.4%	0.3 PPT	29.3%	0.8 PPT
Transit passengers / Transitpassagiere	1'223	-10.9%	18'638	6.7%
General Aviation & other passengers / General Aviation & Sonstige	3'291	-3.0%	47'877	-9.6%
by origin/destination (airline passengers only) / nach Herkunft/Ziel (Linie & Charter)				
Europe / Europa	1'672'578	1.1%	23'287'179	0.2%
European passenger share / Europäischer Passagieranteil	71.8%	-0.1 PPT	74.0%	-0.8 PPT
Intercontinental / Interkontinental	656'951	1.6%	8'172'636	4.7%
Intercontinental passenger share / Interkontinentaler Passagieranteil	28.2%	0.1 PPT	26.0%	0.8 PPT
North America / Nordamerika	8.9%	0.3 PPT	8.5%	0.1 PPT
Middle East / Mittlerer Osten	6.0%	0.2 PPT	5.5%	-0.0 PPT
Far East / Ferner Osten	8.1%	-0.4 PPT	7.4%	0.3 PPT
Africa / Afrika	2.7%	-0.1 PPT	2.6%	0.2 PPT
Latin America / Lateinamerika	2.5%	0.0 PPT	2.0%	0.3 PPT
Air Traffic Movements / Flugbewegungen				
Total Air Traffic Movements / Total Flugbewegungen	20'193	-5.0%	275'329	-1.1%
Passenger Aircraft / Linie & Charter	17'973	-6.3%	243'112	-0.6%
Passenger aircraft / Passagierflüge	17'936	-6.4%	242'717	-0.6%
Freight aircraft / Frachtflüge	37	37.0%	396	12.5%
General Aviation & other / General Aviation & Übrige	2'220	6.8%	32'217	-5.1%
Traffic Ratios (airlines only) & Cargo / Verkehrskennzahlen (Linie & Charter) & Fracht				
Seat Load Factor / Sitzladefaktor	76.6%	3.6 PPT	78.1%	0.2 PPT
Passengers per movement / Passagiere pro Bewegung	129.9	8.1%	129.6	1.9%
Seats per movement / Sitze pro Bewegung	169.7	3.0%	166	1.6%
Average Maximum Take-Off Weight / Durchschnittliches maximales Abfluggewicht	100.8 t	4.4%	96.4 t	1.3%
Freight / Fracht	38'461 t	-6.6%	451'827 t	-8.4%
Air freight / Luftfracht	28'236 t	-6.0%	334'650 t	-7.7%
Trucked freight (Road Feeding Service) / Strassenfracht (zwischen Flughäfen)	10'225 t	-8.2%	117'177 t	-10.2%
Mail / Post	2'707 t	-2.0%	27'007 t	3.0%
ZRH Commercial Activities / ZRH Kommerzgeschäft				
Total turnover in mCHF / Gesamtumsatz in Mio. CHF	53.2	4.1%	601.4	1.3%
Airside		2.7%		0.4%
Landside		5.7%		2.6%
Airside: Spend per departing Passenger / Luftseite: Ausgaben pro abfliegenden Passagier	24.8	1.5%	22.5	-0.9%

Flughafen Zürich AG

Postfach, CH-8058 Zürich-Flughafen
www.flughafen-zuerich.ch