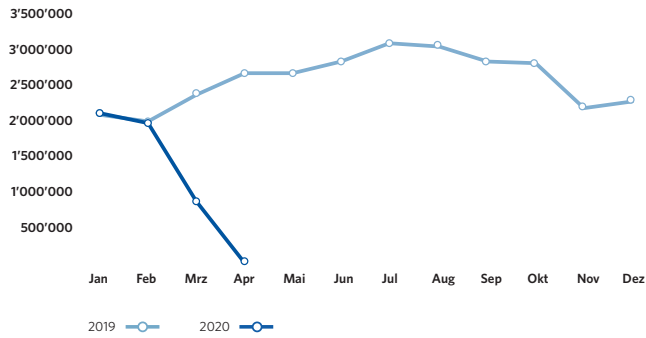
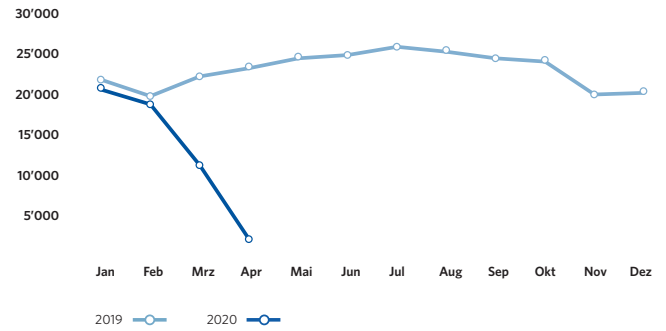


ZRH Key Figures April 2020

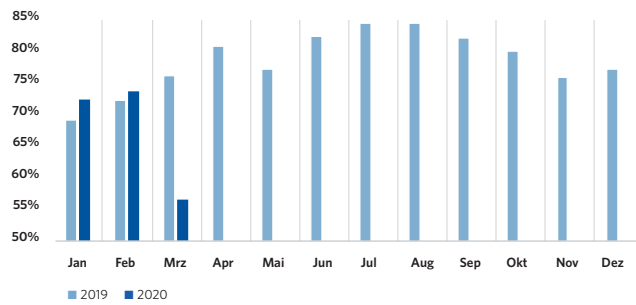
Pax-Numbers / Passagierzahlen



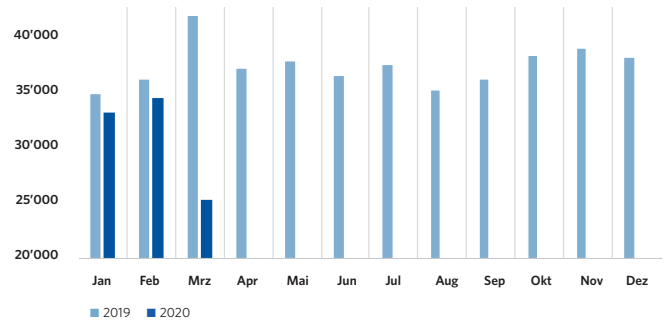
Air Traffic Movements / Flugbewegungen



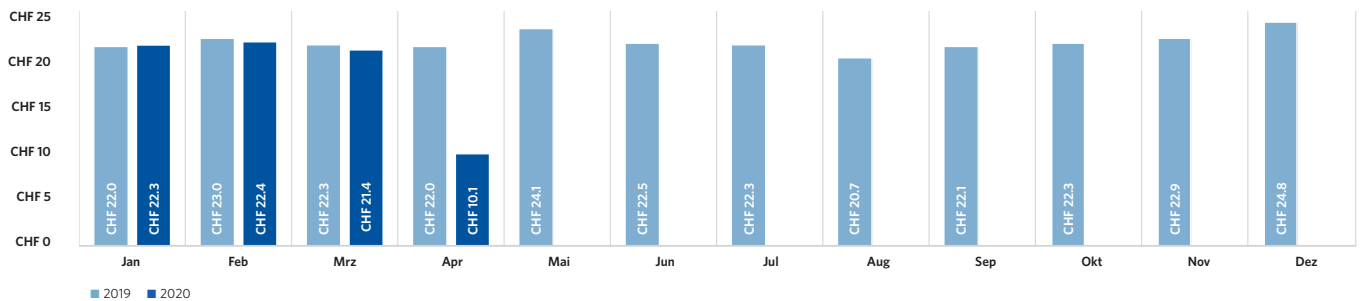
Seat Load Factor / Sitzladefaktor



Freight (in tons) / Fracht (in Tonnen)



Airside: Spend per departing Passenger / Ausgaben pro abfliegenden Passagier



ZRH Key Figures April 2020

Passengers / Passagiere	Apr 2020	Δ PY Δ VJ	YTD 2020	Δ PY Δ VJ
Total passengers / Total Passagiere	26'913	-99.0%	5'076'058	-45.5%
by type of passengers / nach Art der Passagiere				
Airline passengers / Linie & Charter	23'722	-99.1%	5'061'471	-45.6%
Local passengers / Lokalpassagiere	20'866	-98.9%	3'587'335	-45.0%
Transfer passengers / Transferpassagiere	2'812	-99.6%	1'471'684	-46.9%
Transfer share / Transferanteil	11.9%	-16.4 PPT	29.1%	-0.7 PPT
Transit passengers / Transitpassagiere	44	-96.1%	2'452	-64.3%
General Aviation & other passengers / General Aviation & Sonstige	3'191	-8.7%	14'587	-10.5%
by origin/destination (airline passengers only) / nach Herkunft/Ziel (Linie & Charter)				
Europe / Europa	17'464	-99.1%	3'596'909	-46.8%
European passenger share / Europäischer Passagieranteil	73.6%	-0.5 PPT	71.1%	-1.6 PPT
Intercontinental / Interkontinental	5'782	-99.2%	1'464'086	-42.5%
Intercontinental passenger share / Interkontinentaler Passagieranteil	24.4%	-1.5 PPT	28.9%	1.6 PPT
North America / Nordamerika	4.2%	-3.2 PPT	8.1%	0.4 PPT
Middle East / Mittlerer Osten	10.8%	5.0 PPT	6.3%	0.4 PPT
Far East / Ferner Osten	5.5%	-2.1 PPT	8.3%	-0.0 PPT
Africa / Afrika	2.0%	-1.0 PPT	3.2%	0.2 PPT
Latin America / Lateinamerika	2.0%	-0.1 PPT	3.0%	0.6 PPT
Air Traffic Movements / Flugbewegungen				
Total Air Traffic Movements / Total Flugbewegungen	1'921	-91.7%	52'306	-39.7%
Passenger Aircraft / Linie & Charter	897	-95.7%	44'096	-42.2%
Passenger aircraft / Passagierflüge	641	-96.9%	43'694	-42.6%
Freight aircraft / Frachtflüge	256	1063.6%	402	282.9%
General Aviation & other / General Aviation & Übrige	1'024	-60.2%	8'210	-21.5%
Traffic Ratios (airlines only) & Cargo / Verkehrskennzahlen (Linie & Charter) & Fracht				
Seat Load Factor / Sitzladefaktor	20.1%	-59.9 PPT	68.2%	-6.0 PPT
Passengers per movement / Passagiere pro Bewegung	37.0	-71.9%	115.8	-5.2%
Seats per movement / Sitze pro Bewegung	184.6	12.0%	169.9	3.2%
Average Maximum Take-Off Weight / Durchschnittliches maximales Abfluggewicht	153.1 t	62.7%	102.6 t	7.1%
Freight / Fracht	12'177 t	-67.5%	105'712 t	-30.1%
Air freight / Luftfracht	6'324 t	-77.1%	73'663 t	-33.2%
Trucked freight (Road Feeding Service) / Strassenfracht (zwischen Flughäfen)	5'854 t	-40.5%	32'049 t	-21.7%
Mail / Post	336 t	-84.8%	5'426 t	-38.6%
ZRH Commercial Activities / ZRH Kommerzgeschäft				
Total turnover in mCHF / Gesamtumsatz in Mio. CHF	4.6	-91.0%	108.1	-39.4%
Airside		-99.5%		-45.9%
Landside		-78.6%		-30.4%
Airside: Spend per departing Passenger / Luftseite: Ausgaben pro abfliegenden Passagier	10.1	-54.1%	22.1	-0.7%

Flughafen Zürich AG

Postfach, CH-8058 Zürich-Flughafen
www.flughafen-zuerich.ch