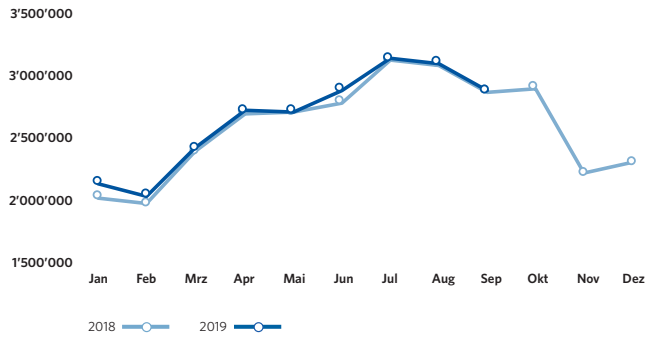
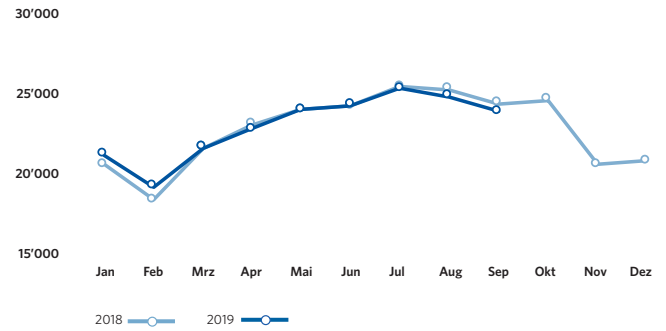


ZRH Key Figures September 2019

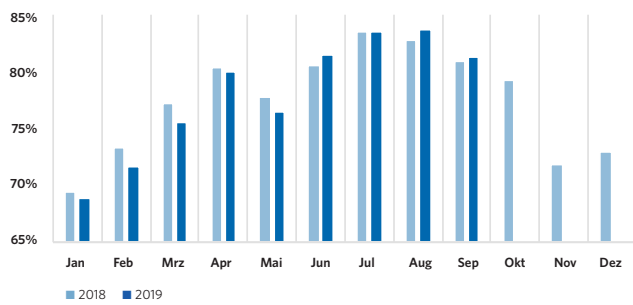
Pax-Numbers / Passagierzahlen



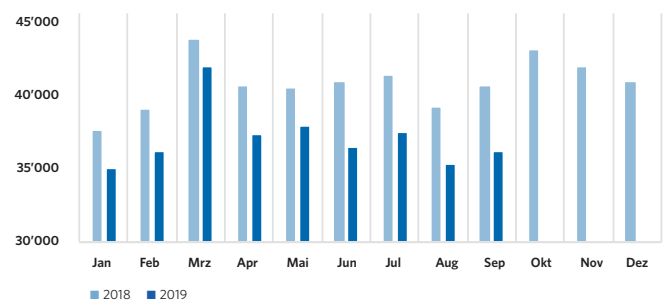
Air Traffic Movements / Flugbewegungen



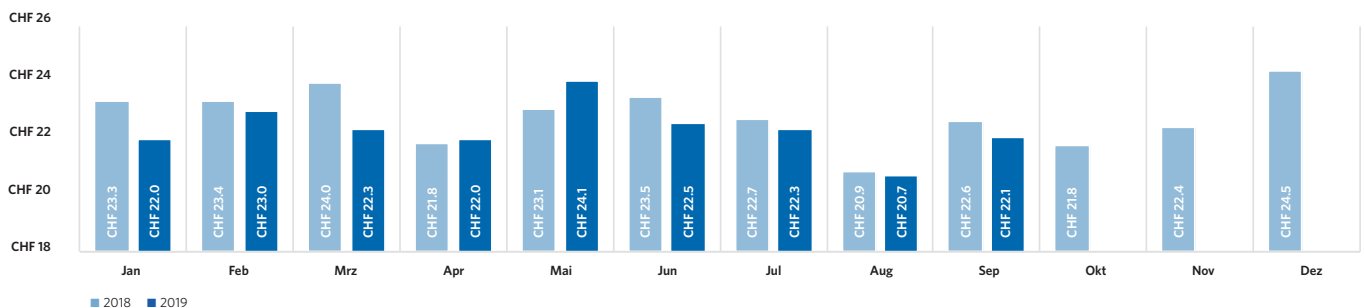
Seat Load Factor / Sitzladefaktor



Freight (in tons) / Fracht (in Tonnen)



Airside: Spend per departing Passenger / Ausgaben pro abfliegenden Passagier



ZRH Key Figures September 2019

Passengers / Passagiere	September 2019	Δ VJ Δ PY	YTD 2019	Δ VJ Δ PY
Total passengers / Total Passagiere	2'889'060	0.3%	24'075'283	1.6%
by type of passengers / nach Art der Passagiere				
Airline passengers / Linie & Charter	2'884'960	0.3%	24'037'531	1.6%
Local passengers / Lokalpassagiere	2'059'246	- 0.3%	16'997'335	0.5%
Transfer passengers / Transferpassagiere	824'502	1.7%	7'026'374	4.4%
Transfer share / Transferanteil	28.6%	0.4 PPT	29.2%	0.8 PPT
Transit passengers / Transitpassagiere	1'212	32.3%	13'822	12.6%
General Aviation & other passengers / General Aviation & Sonstige	4'100	-15.4%	37'752	-11.2%
by origin/destination (airline passengers only) / nach Herkunft/Ziel (Linie & Charter)				
Europe / Europa	2'198'713	0.3%	17'860'799	0.4%
European passenger share / Europäischer Passagieranteil	76.2%	- 0.0 PPT	74.3%	- 0.9 PPT
Intercontinental / Interkontinental	686'247	0.3%	6'176'732	5.5%
Intercontinental passenger share / Interkontinentaler Passagieranteil	23.8%	0.0 PPT	25.7%	0.9 PPT
North America / Nordamerika	8.7%	- 0.3 PPT	8.6%	0.1 PPT
Middle East / Mittlerer Osten	4.7%	- 0.0 PPT	5.4%	- 0.1 PPT
Far East / Ferner Osten	6.4%	0.0 PPT	7.3%	0.3 PPT
Africa / Afrika	2.3%	0.2 PPT	2.4%	0.3 PPT
Latin America / Lateinamerika	1.6%	0.1 PPT	2.0%	0.4 PPT
Air Traffic Movements / Flugbewegungen				
Total Air Traffic Movements / Total Flugbewegungen	24'369	-1.9%	211'254	0.1%
Passenger Aircraft / Linie & Charter	21'582	-0.6%	186'284	1.2%
Passenger aircraft / Passagierflüge	21'548	- 0.7%	186'001	1.2%
Freight aircraft / Frachtflüge	34	17.2%	284	8.0%
General Aviation & other / General Aviation & Übrige	2'787	-10.8%	24'970	-7.2%
Traffic Ratios (airlines only) & Cargo / Verkehrskennzahlen (Linie & Charter) & Fracht				
Seat Load Factor / Sitzladefaktor	81.3%	0.4 PPT	78.4%	-0.4 PPT
Passengers per movement / Passagiere pro Bewegung	133.9	1.0%	129.2	0.5%
Seats per movement / Sitze pro Bewegung	164.8	0.5%	164.9	1.0%
Average Maximum Take-Off Weight / Durchschnittliches maximales Abfluggewicht	95.8 t	0.7%	95.7 t	0.6%
Freight / Fracht	36'410 t	-11.0%	335'579 t	-8.4%
Air freight / Luftfracht	27'393 t	- 10.9%	248'990 t	- 8.0%
Trucked freight (Road Feeding Service) / Strassenfracht (zwischen Flughäfen)	9'017 t	- 11.2%	86'589 t	- 9.6%
Mail / Post	2'246 t	12.6%	19'739 t	5.0%
ZRH Commercial Activities / ZRH Kommerzgeschäft				
Total turnover in mCHF / Gesamtumsatz in Mio. CHF	52.5	0.1%	450.8	0.6%
Airside		- 2.0%		- 0.2%
Landside		3.4%		1.8%
Airside: Spend per departing Passenger / Luftseite: Ausgaben pro abfliegenden Passagier	22.1	-2.2%	22.3	-1.8%

Flughafen Zürich AG

Postfach, CH-8058 Zürich-Flughafen
www.flughafen-zuerich.ch