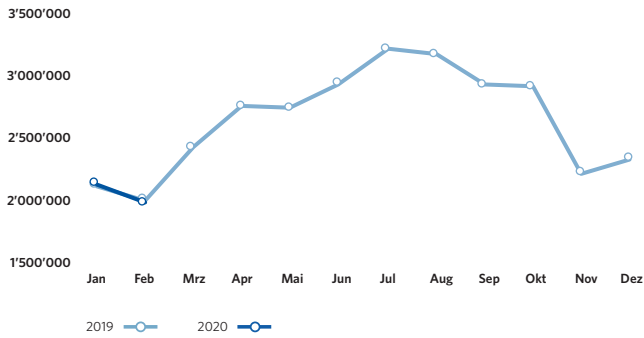
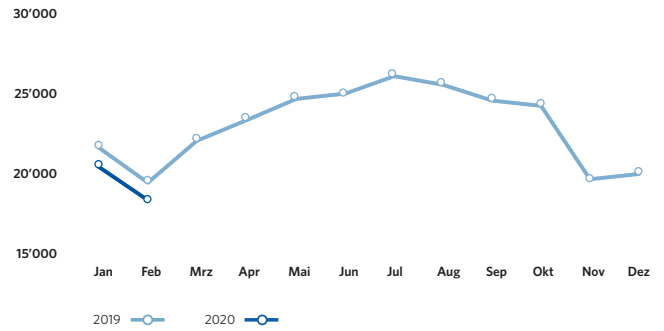


# ZRH Key Figures February / Februar 2020

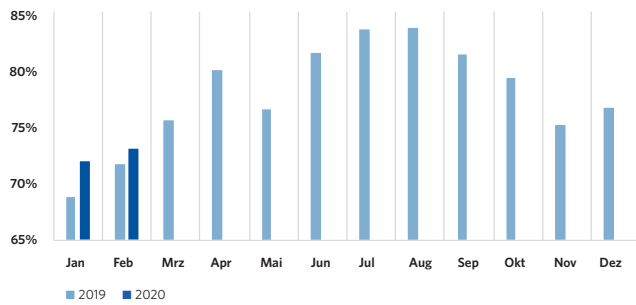
## Pax-Numbers / Passagierzahlen



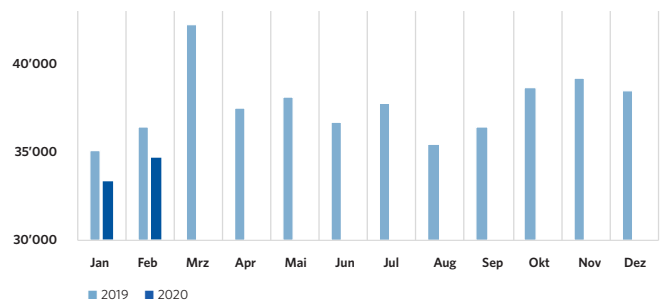
## Air Traffic Movements / Flugbewegungen



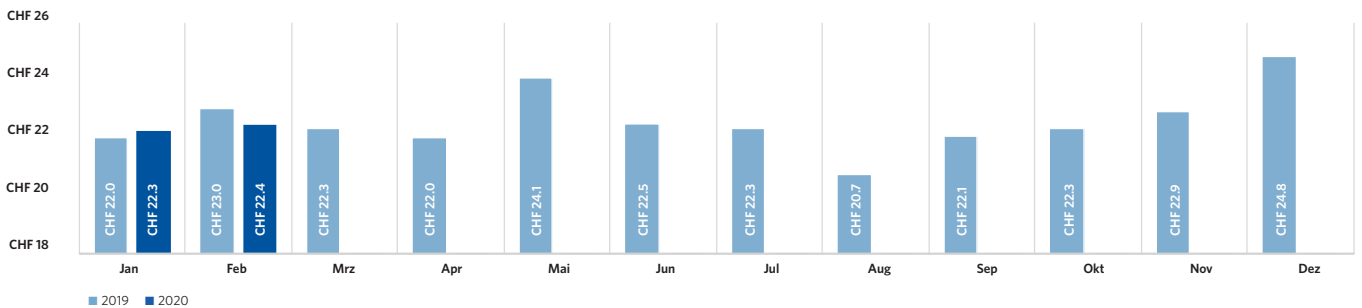
## Seat Load Factor / Sitzladefaktor



## Freight (in tons) / Fracht (in Tonnen)



## Airside: Spend per departing Passenger / Ausgaben pro abfliegenden Passagier



# ZRH Key Figures February / Februar 2020

<b>Passengers / Passagiere</b>	February 2020 Februar 2020	Δ PY Δ VJ	YTD 2020	Δ PY Δ VJ
<b>Total passengers / Total Passagiere</b>	<b>2'010'199</b>	<b>-1.2%</b>	<b>4'159'011</b>	<b>-0.2%</b>
<b>by type of passengers / nach Art der Passagiere</b>				
<b>Airline passengers / Linie &amp; Charter</b>	<b>2'006'558</b>	<b>-1.2%</b>	<b>4'149'908</b>	<b>-0.2%</b>
Local passengers / Lokalpassagiere	1'435'073	-0.5%	2'910'070	0.1%
Transfer passengers / Transferpassagiere	570'510	-2.8%	1'237'962	-0.9%
Transfer share / Transferanteil	28.4%	-0.5 PPT	29.8%	-0.2 PPT
Transit passengers / Transitpassagiere	975	-42.6%	1'876	-51.5%
<b>General Aviation &amp; other passengers / General Aviation &amp; Sonstige</b>	<b>3'641</b>	<b>9.1%</b>	<b>9'103</b>	<b>-3.1%</b>
<b>by origin/destination (airline passengers only) / nach Herkunft/Ziel (Linie &amp; Charter)</b>				
<b>Europe / Europa</b>	<b>1'458'865</b>	<b>-0.6%</b>	<b>2'970'124</b>	<b>0.0%</b>
European passenger share / Europäischer Passagieranteil	72.7%	0.4 PPT	71.6%	0.2 PPT
<b>Intercontinental / Interkontinental</b>	<b>547'693</b>	<b>-2.7%</b>	<b>1'179'784</b>	<b>-0.8%</b>
Intercontinental passenger share / Interkontinentaler Passagieranteil	27.3%	-0.4 PPT	28.4%	-0.2 PPT
North America / Nordamerika	7.8%	0.7 PPT	8.2%	0.4 PPT
Middle East / Mittlerer Osten	6.3%	0.0 PPT	6.2%	0.1 PPT
Far East / Ferner Osten	7.3%	-1.5 PPT	8.3%	-0.8 PPT
Africa / Afrika	3.2%	0.2 PPT	3.0%	0.0 PPT
Latin America / Lateinamerika	2.7%	0.1 PPT	2.8%	0.1 PPT
<b>Air Traffic Movements / Flugbewegungen</b>				
<b>Total Air Traffic Movements / Total Flugbewegungen</b>	<b>18'656</b>	<b>-5.3%</b>	<b>39'250</b>	<b>-5.1%</b>
<b>Passenger Aircraft / Linie &amp; Charter</b>	<b>16'347</b>	<b>-5.2%</b>	<b>34'029</b>	<b>-5.7%</b>
Passenger aircraft / Passagierflüge	16'308	-5.3%	33'957	-5.8%
Freight aircraft / Frachtflüge	39	39.3%	72	35.8%
<b>General Aviation &amp; other / General Aviation &amp; Übrige</b>	<b>2'309</b>	<b>-5.9%</b>	<b>5'221</b>	<b>-1.0%</b>
<b>Traffic Ratios (airlines only) &amp; Cargo / Verkehrskennzahlen (Linie &amp; Charter) &amp; Fracht</b>				
<b>Seat Load Factor / Sitzladefaktor</b>	<b>73.0%</b>	<b>1.3 PPT</b>	<b>72.4%</b>	<b>2.2 PPT</b>
Passengers per movement / Passagiere pro Bewegung	123.0	4.3%	122.2	5.9%
Seats per movement / Sitze pro Bewegung	168.7	2.4%	168.9	2.6%
Average Maximum Take-Off Weight / Durchschnittliches maximales Abfluggewicht	99.9 t	3.8%	100.3 t	4.1%
<b>Freight / Fracht</b>	<b>34'697 t</b>	<b>-4.7%</b>	<b>68'044 t</b>	<b>-4.8%</b>
Air freight / Luftfracht	25'302 t	-4.3%	49'949 t	-4.3%
Trucked freight (Road Feeding Service) / Strassenfracht (zwischen Flughäfen)	9'396 t	-5.7%	18'094 t	-6.2%
<b>Mail / Post</b>	<b>1'702 t</b>	<b>-17.1%</b>	<b>3'957 t</b>	<b>-6.5%</b>
<b>ZRH Commercial Activities / ZRH Kommerzgeschäft</b>				
<b>Total turnover in mCHF / Gesamtumsatz in Mio. CHF</b>	<b>39.9</b>	<b>0.8%</b>	<b>83.1</b>	<b>1.7%</b>
Airside		-3.6%		-0.9%
Landside		7.1%		5.2%
Airside: Spend per departing Passenger / Luftseite: Ausgaben pro abfliegenden Passagier	22.4	-2.5%	22.3	-0.7%

## Flughafen Zürich AG

Postfach, CH-8058 Zürich-Flughafen  
www.flughafen-zuerich.ch