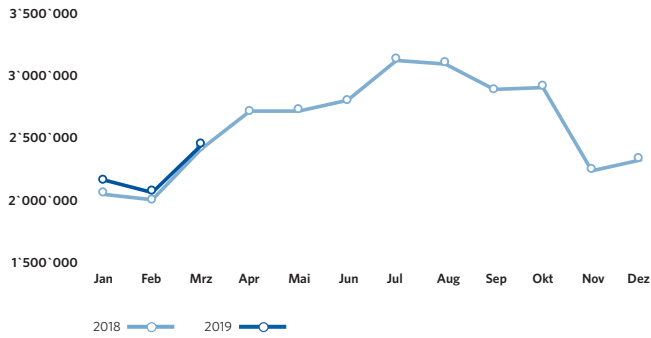
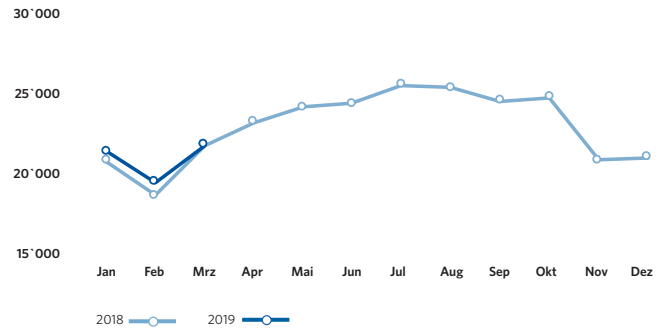


ZRH Key Figures März / March 2019

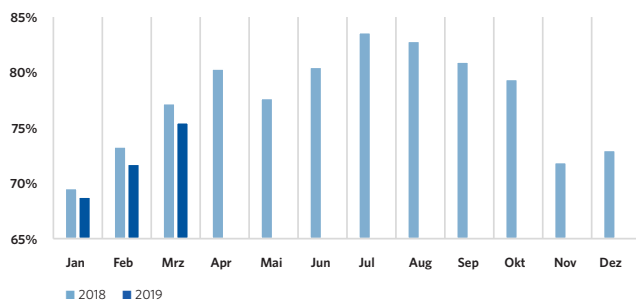
Pax-Numbers / Passagierzahlen



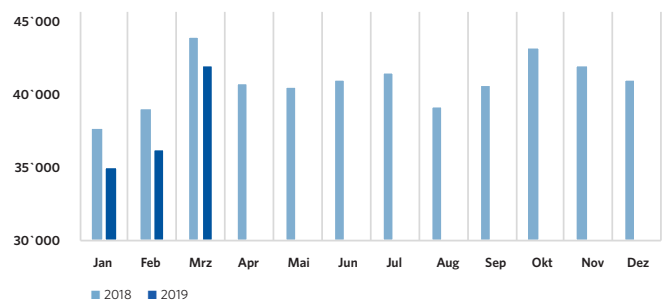
Air Traffic Movements / Flugbewegungen



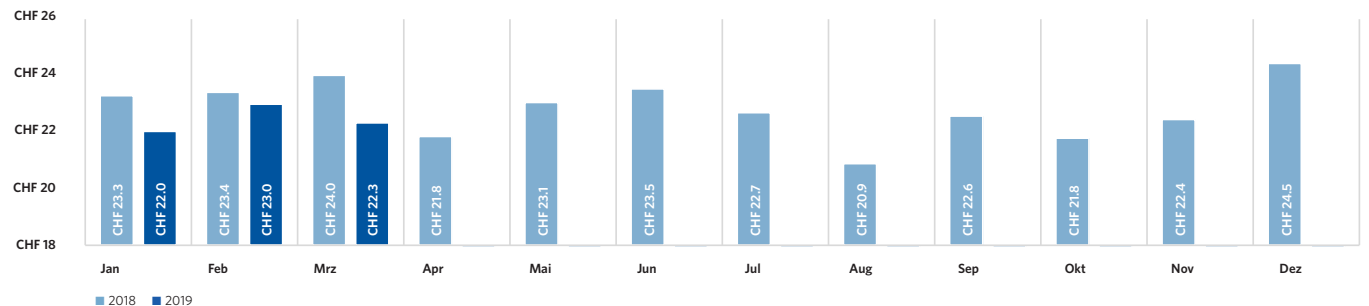
Seat Load Factor / Sitzladefaktor



Freight (in tons) / Fracht (in Tonnen)



Airside: Spend per departing Passenger / Ausgaben pro abfliegenden Passagier



Flughafen Zürich AG

Postfach, CH-8058 Zürich-Flughafen
www.flughafen-zuerich.ch

ZRH Key Figures März / March 2019

Passengers / Passagiere	March 2019 März 2019	Δ VJ Δ PY	YTD 2019	Δ VJ Δ PY
Total passengers / Total Passagiere	2'421'744	1.2%	6'590'205	3.4%
by type of passengers / nach Art der Passagiere				
Airline passengers / Linie & Charter	2'418'330	1.2%	6'577'394	3.4%
Local passengers / Lokalpassagiere	1'666'351	0.0%	4'572'142	1.5%
Transfer passengers / Transferpassagiere	750'128	4.3%	1'999'530	7.9%
Transfer share / Transferanteil	31.0%	0.9 PPT	30.4%	1.3 PPT
Transit passengers / Transitpassagiere	1'851	-23.9%	5'722	16.2%
General Aviation & other passengers / General Aviation & Sonstige	3'414	-9.4%	12'811	-13.2%
by origin/destination (airline passengers only) / nach Herkunft/Ziel (Linie & Charter)				
Europe / Europa	1'765'602	0.0%	4'735'618	1.4%
European passenger share / Europäischer Passagieranteil	73.0%	-0.9 PPT	72.0%	-1.4 PPT
Intercontinental / Interkontinental	652'728	4.8%	1'841'776	9.0%
Intercontinental passenger share / Interkontinentaler Passagieranteil	27.0%	0.9 PPT	28.0%	1.4 PPT
North America / Nordamerika	7.8%	0.1 PPT	7.8%	0.3 PPT
Middle East / Mittlerer Osten	5.8%	-0.3 PPT	6.0%	-0.3 PPT
Far East / Ferner Osten	8.0%	0.2 PPT	8.7%	0.3 PPT
Africa / Afrika	3.0%	0.5 PPT	3.0%	0.4 PPT
Latin America / Lateinamerika	2.3%	0.6 PPT	2.6%	0.8 PPT
Air Traffic Movements / Flugbewegungen				
	March 2019 März 2019	Δ VJ Δ PY	YTD 2019	Δ VJ Δ PY
Total Air Traffic Movements / Total Flugbewegungen	22'071	0.0%	63'448	2.4%
Passenger Aircraft / Linie & Charter	19'460	1.4%	55'563	3.4%
Passenger aircraft / Passagierflüge	19'430	1.5%	55'480	3.4%
Freight aircraft / Frachtflüge	30	-11.8%	83	-6.7%
General Aviation & other / General Aviation & Übrige	2'611	-9.8%	7'885	-4.0%
Traffic Ratios (airlines only) & Cargo / Verkehrskennzahlen (Linie & Charter) & Fracht				
	March 2019 März 2019	Δ VJ Δ PY	YTD 2019	Δ VJ Δ PY
Seat Load Factor / Sitzladefaktor	75.5%	-1.8 PPT	72.0%	-1.4 PPT
Passengers per movement / Passagiere pro Bewegung	124.5	-0.2%	118.6	0.0%
Seats per movement / Sitze pro Bewegung	165.0	2.1%	164.7	1.9%
Average Maximum Take-Off Weight / Durchschnittliches maximales Abfluggewicht	96.5 t	1.3%	96.4 t	0.8%
Freight / Fracht	42'231 t	-4.5%	113'738 t	-6.3%
Air freight / Luftfracht	30'456 t	-4.4%	82'664 t	-5.6%
Trucked freight (Road Feeding Service) / Strassenfracht (zwischen Flughäfen)	11'774 t	-4.9%	31'074 t	-8.1%
Mail / Post	2'389 t	0.8%	6'622 t	1.9%
ZRH Commercial Activities / ZRH Kommerzgeschäft				
	March 2019 März 2019	Δ VJ Δ PY	YTD 2019	Δ VJ Δ PY
Total turnover in mCHF / Gesamtumsatz in Mio. CHF	46.0	-5.2%	127.7	-2.1%
Airside		-5.9%		-1.7%
Landside		-4.3%		-2.6%
Airside: Spend per departing Passenger / Luftseite: Ausgaben pro abfliegenden Passagier	22.3	-7.0%	22.4	-4.9%

Flughafen Zürich AG

Postfach, CH-8058 Zürich-Flughafen
www.flughafen-zuerich.ch