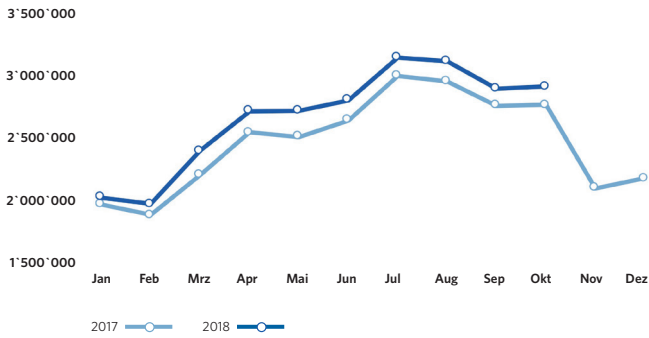
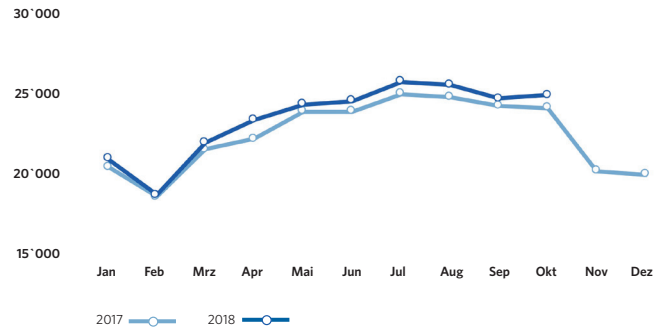


ZRH Key Figures

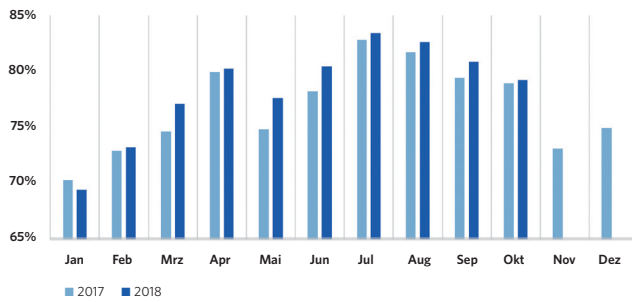
Pax-Numbers / Passagierzahlen



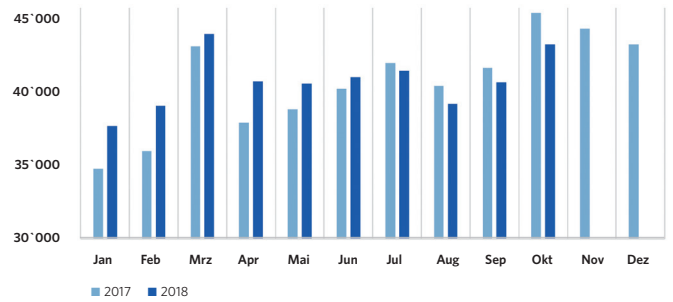
Air Traffic Movements / Flugbewegungen



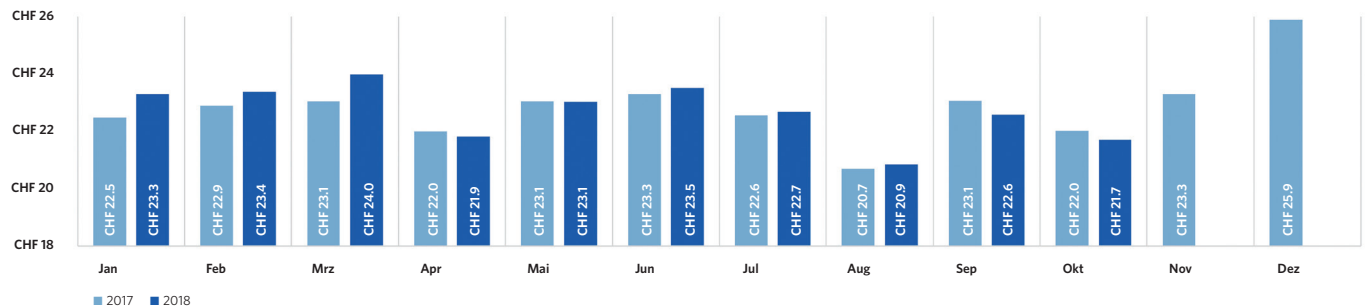
Seat Load Factor / Sitzladefaktor



Freight (in tons) / Fracht (in Tonnen)



Airside: Spend per departing Passenger / Ausgaben pro abfliegenden Passagier



Flughafen Zürich AG

Postfach, CH-8058 Zürich-Flughafen
www.flughafen-zuerich.ch

ZRH Key Figures

Passengers / Passagiere	Okt 2018 Oct 2018	Δ VJ Δ PY	YTD 2018	Δ VJ Δ PY
Total passengers / Total Passagiere	2'904'250	5.3%	26'594'602	5.8%
by type of passengers / nach Art der Passagiere				
Airline passengers / Linie & Charter	2'900'118	5.3%	26'547'963	5.8%
Local passengers / Lokalpassagiere	2'150'161	4.7%	19'055'044	5.6%
Transfer passengers / Transferpassagiere	748'718	7.0%	7'479'410	6.3%
Transfer share / Transferanteil	25.8%	0.4 PPT	28.2%	0.1 PPT
Transit passengers / Transitpassagiere	1'239	9.9%	13'509	15.7%
General Aviation & other passengers / General Aviation & Sonstige	4'132	-6.6%	46'639	7.5%
by origin/destination (airline passengers only) / nach Herkunft/Ziel (Linie & Charter)				
Europe / Europa	2'188'063	3.4%	19'981'608	4.1%
European passenger share / Europäischer Passagieranteil	75.4%	-1.4 PPT	75.3%	-1.2 PPT
Intercontinental / Interkontinental	712'055	11.8%	6'566'355	11.2%
Intercontinental passenger share / Interkontinentaler Passagieranteil	24.6%	1.4 PPT	24.7%	1.2 PPT
North America / Nordamerika	8.2%	0.5 PPT	8.5%	0.4 PPT
Middle East / Mittlerer Osten	5.2%	-0.3 PPT	5.4%	0.1 PPT
Far East / Ferner Osten	6.6%	0.1 PPT	6.9%	0.0 PPT
Africa / Afrika	2.9%	0.7 PPT	2.3%	0.4 PPT
Latin America / Lateinamerika	1.7%	0.4 PPT	1.6%	0.4 PPT
Air Traffic Movements / Flugbewegungen				
Total Air Traffic Movements / Total Flugbewegungen	25'085	3.5%	236'128	2.6%
Passenger Aircraft / Linie & Charter	22'335	5.0%	206'482	2.8%
Passenger aircraft / Passagierflüge	22'302	5.0%	206'186	2.9%
Freight aircraft / Frachtflüge	33	-2.9%	296	-9.2%
General Aviation & other / General Aviation & Übrige	2'750	-7.0%	29'646	1.3%
Traffic Ratios (airlines only) & Cargo / Verkehrskennzahlen (Linie & Charter) & Fracht				
Seat Load Factor / Sitzladefaktor	79.3%	0.3 PPT	78.9%	1.1 PPT
Passengers per movement / Passagiere pro Bewegung	130.0	0.3%	128.8	2.9%
Seats per movement / Sitze pro Bewegung	164.0	-0.1%	163.3	1.5%
Average Maximum Take-Off Weight / Durchschnittliches maximales Abfluggewicht	94.7 t	1.2%	95.0 t	1.7%
Freight / Fracht	43'488 t	-4.8%	409'777 t	1.8%
Air freight / Luftfracht	31'732 t	-3.8%	302'257 t	3.3%
Trucked freight (Road Feeding Service) / Strassenfracht (zwischen Flughäfen)	11'756 t	-7.4%	107'520 t	-2.1%
Mail / Post	2'254 t	-8.6%	21'058 t	-17.3%
ZRH Commercial Activities / ZRH Kommerzgeschäft				
Total turnover in mCHF / Gesamtumsatz in Mio. CHF	51.5	2.0%	499.6	3.7%
Airside		3.9%		6.4%
Landside		-0.7%		-0.1%
Airside: Spend per departing Passenger / Luftseite: Ausgaben pro abfliegenden Passagier	21.7	-1.4%	22.6	0.6%

Flughafen Zürich AG

Postfach, CH-8058 Zürich-Flughafen
www.flughafen-zuerich.ch