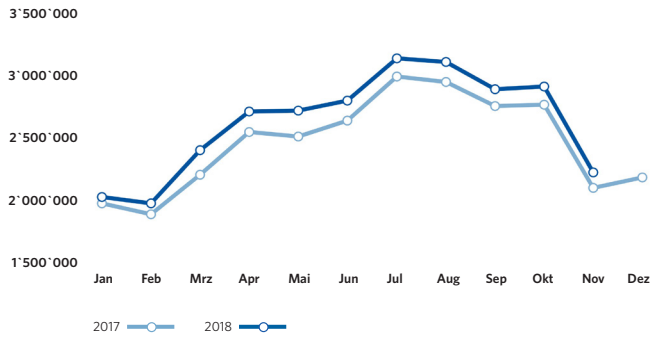
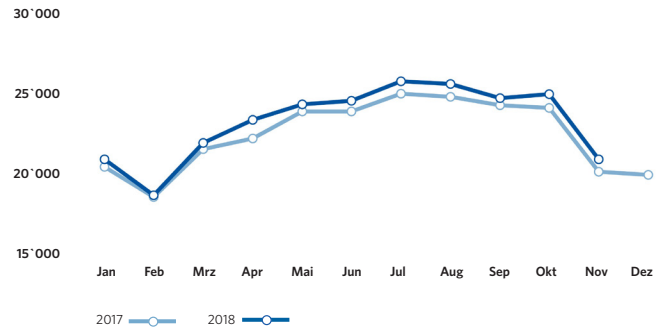


ZRH Key Figures

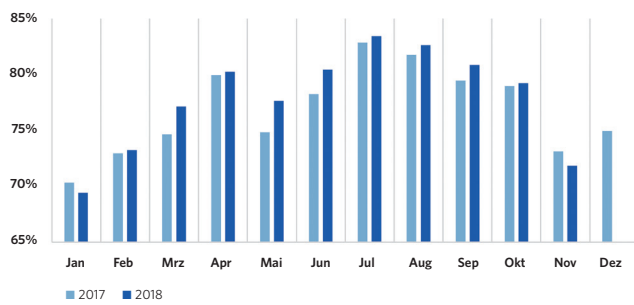
Pax-Numbers / Passagierzahlen



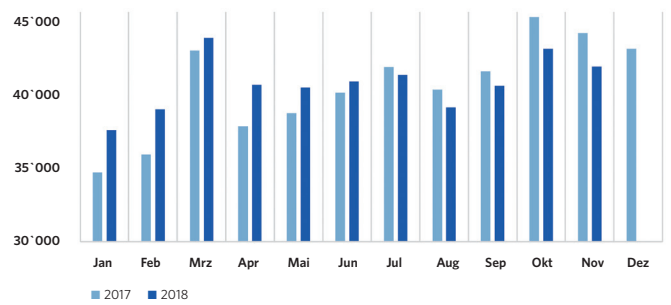
Air Traffic Movements / Flugbewegungen



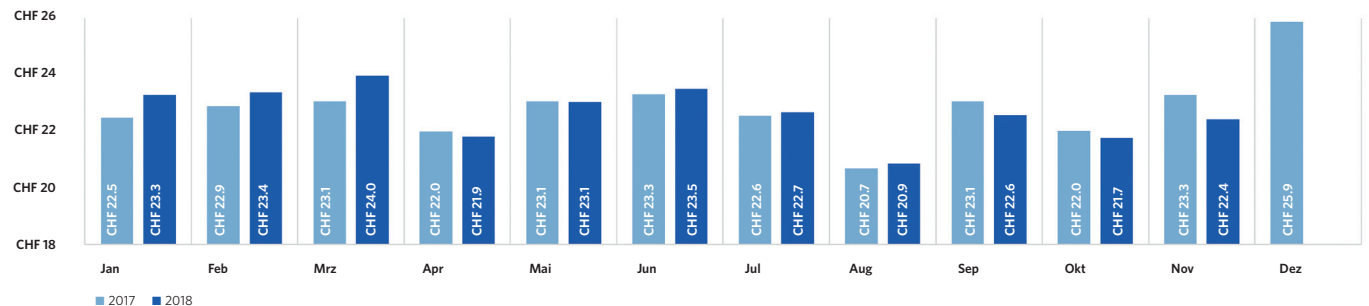
Seat Load Factor / Sitzladefaktor



Freight (in tons) / Fracht (in Tonnen)



Airside: Spend per departing Passenger / Ausgaben pro abfliegenden Passagier



Flughafen Zürich AG

Postfach, CH-8058 Zürich-Flughafen
www.flughafen-zuerich.ch

ZRH Key Figures

Passengers / Passagiere	Nov 2018	ΔVJ ΔPY	YTD 2018	ΔVJ ΔPY
Total passengers / Total Passagiere	2'214'909	6.0%	28'809'511	5.8%
by type of passengers / nach Art der Passagiere				
Airline passengers / Linie & Charter	2'211'996	6.1%	28'759'959	5.8%
Local passengers / Lokalpassagiere	1'544'087	6.0%	20'599'131	5.6%
Transfer passengers / Transferpassagiere	666'362	6.4%	8'145'772	6.3%
Transfer share / Transferanteil	30.1%	0.1 PPT	28.3%	0.1 PPT
Transit passengers / Transitpassagiere	1'547	-29.1%	15'056	8.7%
General Aviation & other passengers / General Aviation & Sonstige	2'913	-25.1%	49'552	4.8%
by origin/destination (airline passengers only) / nach Herkunft/Ziel (Linie & Charter)				
Europe / Europa	1'615'289	4.5%	21'596'897	4.2%
European passenger share / Europäischer Passagieranteil	73.0%	-1.1 PPT	75.1%	-1.2 PPT
Intercontinental / Interkontinental	596'707	10.6%	7'163'062	11.2%
Intercontinental passenger share / Interkontinentaler Passagieranteil	27.0%	1.1 PPT	24.9%	1.2 PPT
North America / Nordamerika	8.0%	0.1 PPT	8.4%	0.4 PPT
Middle East / Mittlerer Osten	5.7%	-0.2 PPT	5.5%	0.1 PPT
Far East / Ferner Osten	7.9%	0.1 PPT	7.0%	0.0 PPT
Africa / Afrika	3.1%	0.4 PPT	2.3%	0.4 PPT
Latin America / Lateinamerika	2.3%	0.7 PPT	1.7%	0.4 PPT
Air Traffic Movements / Flugbewegungen				
Total Air Traffic Movements / Total Flugbewegungen	21'070	3.8%	257'198	2.7%
Passenger Aircraft / Linie & Charter	18'833	5.6%	225'315	3.1%
Passenger aircraft / Passagierflüge	18'804	5.7%	224'990	3.1%
Freight aircraft / Frachtflüge	29	-14.7%	325	-9.7%
General Aviation & other / General Aviation & Übrige	2'237	-9.5%	31'883	0.4%
Traffic Ratios (airlines only) & Cargo / Verkehrskennzahlen (Linie & Charter) & Fracht				
Seat Load Factor / Sitzladefaktor	71.9%	-1.3 PPT	78.3%	0.9 PPT
Passengers per movement / Passagiere pro Bewegung	117.6	0.4%	127.8	2.7%
Seats per movement / Sitze pro Bewegung	163.7	2.2%	163.4	1.5%
Average Maximum Take-Off Weight / Durchschnittliches maximales Abfluggewicht	95.7 t	1.4%	95.1 t	1.7%
Freight / Fracht	42'251 t	-5.2%	452'028 t	1.1%
Air freight / Luftfracht	30'438 t	-5.0%	332'695 t	2.5%
Trucked freight (Road Feeding Service) / Strassenfracht (zwischen Flughäfen)	11'813 t	-5.8%	119'333 t	-2.4%
Mail / Post	2'394 t	0.5%	23'452 t	-15.8%
ZRH Commercial Activities / ZRH Kommerzgeschäft				
Total turnover in mCHF / Gesamtumsatz in Mio. CHF	42.9	1.3%	542.7	3.5%
Airside		2.1%		6.1%
Landside		0.2%		0.0%
Airside: Spend per departing Passenger / Luftseite: Ausgaben pro abfliegenden Passagier	22.4	-3.8%	22.6	0.3%

Flughafen Zürich AG

Postfach, CH-8058 Zürich-Flughafen
www.flughafen-zuerich.ch