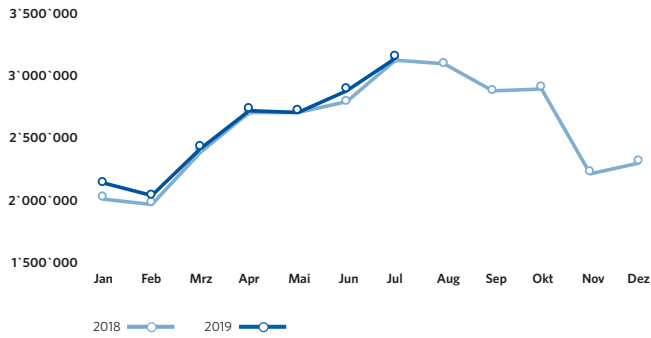
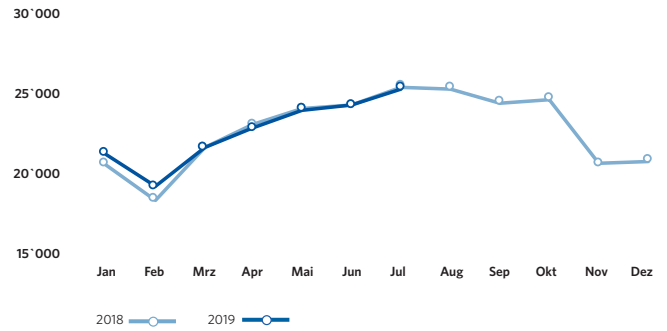


ZRH Key Figures July/Juli 2019

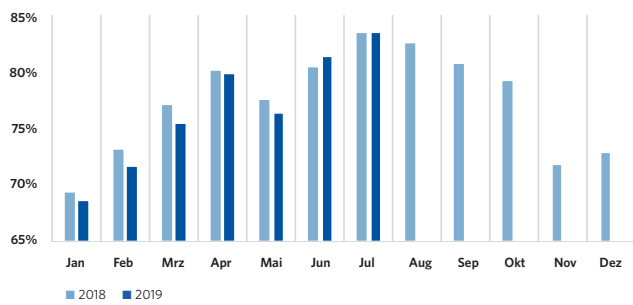
Pax-Numbers / Passagierzahlen



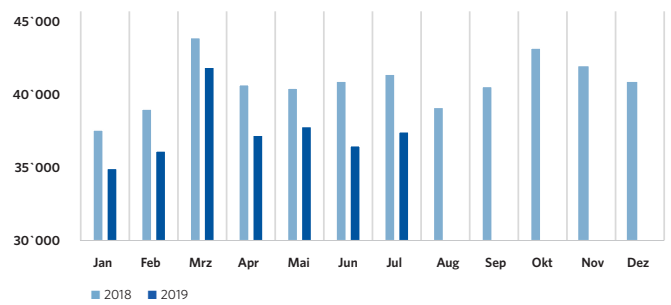
Air Traffic Movements / Flugbewegungen



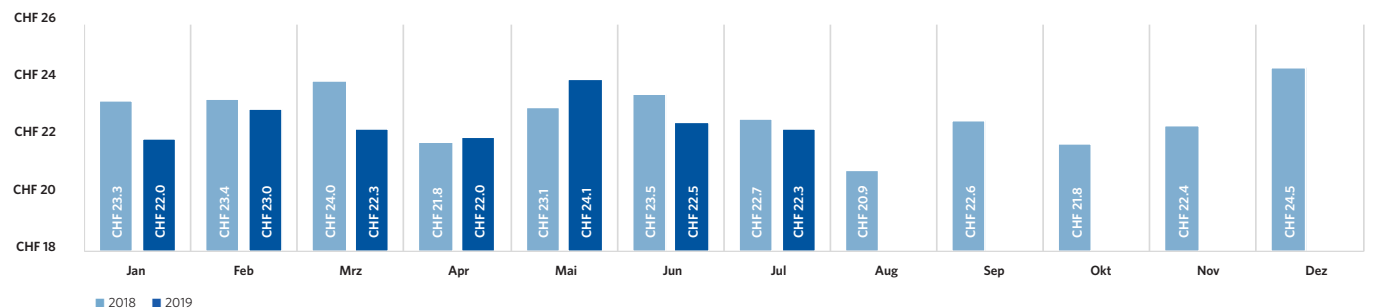
Seat Load Factor / Sitzladefaktor



Freight (in tons) / Fracht (in Tonnen)



Airside: Spend per departing Passenger / Ausgaben pro abfliegenden Passagier



ZRH Key Figures July/Juli 2019

Passengers / Passagiere	July 2019 Juli 2019	Δ VJ Δ PY	YTD 2019	Δ VJ Δ PY
Total passengers / Total Passagiere	3'149'819	0.6%	18'073'953	2.1%
by type of passengers / nach Art der Passagiere				
Airline passengers / Linie & Charter	3'145'293	0.7%	18'044'284	2.1%
Local passengers / Lokalpassagiere	2'254'392	-0.1%	12'778'501	0.9%
Transfer passengers / Transferpassagiere	889'348	2.6%	5'254'310	5.1%
Transfer share / Transferanteil	28.3%	0.5 PPT	29.10%	0.8 PPT
Transit passengers / Transitpassagiere	1'553	1.4%	11'473	15.2%
General Aviation & other passengers / General Aviation & Sonstige	4'526	-10.7%	29'669	-11.3%
by origin/destination (airline passengers only) / nach Herkunft/Ziel (Linie & Charter)				
Europe / Europa	2'366'623	0.0%	13'337'061	0.3%
European passenger share / Europäischer Passagieranteil	75.2%	-0.5 PPT	73.90%	-1.3 PPT
Intercontinental / Interkontinental	778'670	2.8%	4'707'223	7.4%
Intercontinental passenger share / Interkontinentaler Passagieranteil	24.8%	0.5 PPT	26.10%	1.3 PPT
North America / Nordamerika	9.4%	-0.0 PPT	8.40%	0.2 PPT
Middle East / Mittlerer Osten	5.2%	-0.0 PPT	5.50%	-0.0 PPT
Far East / Ferner Osten	6.5%	0.3 PPT	7.60%	0.4 PPT
Africa / Afrika	2.0%	0.1 PPT	2.50%	0.3 PPT
Latin America / Lateinamerika	1.7%	0.1 PPT	2.10%	0.4 PPT
Air Traffic Movements / Flugbewegungen				
	July 2019 Juli 2019	Δ VJ Δ PY	YTD 2019	Δ VJ Δ PY
Total Air Traffic Movements / Total Flugbewegungen	25'757	-0.4%	161'628	0.7%
Passenger Aircraft / Linie & Charter	22'716	-0.6%	142'147	1.7%
Passenger aircraft / Passagierflüge	22'677	-0.6%	141'935	1.7%
Freight aircraft / Frachtflüge	39	39.3%	213	4.9%
General Aviation & other / General Aviation & Übrige	3'041	0.6%	19'481	-6.1%
Traffic Ratios (airlines only) & Cargo / Verkehrskennzahlen (Linie & Charter) & Fracht				
	July 2019 Juli 2019	Δ VJ Δ PY	YTD 2019	Δ VJ Δ PY
Seat Load Factor / Sitzladefaktor	83.5%	-0.0 PPT	77.2%	-0.7 PPT
Passengers per movement / Passagiere pro Bewegung	138.7	1.3%	127.1	0.4%
Seats per movement / Sitze pro Bewegung	166.2	1.3%	164.9	1.3%
Average Maximum Take-Off Weight / Durchschnittliches maximales Abfluggewicht	96.5 t	1.8%	95.6 t	0.6%
Freight / Fracht	37'707 t	-9.5%	263'710 t	-7.8%
Air freight / Luftfracht	28'226 t	-9.8%	194'457 t	-7.2%
Trucked freight (Road Feeding Service) / Strassenfracht (zwischen Flughäfen)	9'481 t	-8.6%	69'253 t	-9.4%
Mail / Post	2'205 t	8.6%	15'380 t	4.4%
ZRH Commercial Activities / ZRH Kommerzgeschäft				
	July 2019 Juli 2019	Δ VJ Δ PY	YTD 2019	Δ VJ Δ PY
Total turnover in mCHF / Gesamtumsatz in Mio. CHF	58.5	1.0%	344.9	0.6%
Airside		-1.0%		0.1%
Landside		4.0%		1.4%
Airside: Spend per departing Passenger / Luftseite: Ausgaben pro abfliegenden Passagier	22.3	-1.6%	22.6	-2.0%

Flughafen Zürich AG

Postfach, CH-8058 Zürich-Flughafen
www.flughafen-zuerich.ch